

TRAFFIC CONTROL PLAN GUIDELINES

- All Traffic Control Plans must follow the Manual for Uniform Traffic Control Devices (MUTCD)

<http://mutcd.fhwa.dot.gov/htm/2003r1/part6/part6-toc.htm>

- The City Traffic Engineer or his representatives have the authority to initiate field changes to assure public safety.
- The contractor must submit a TCP using legible lettering and clear, contrasting symbols for viewing or printing.
- Indicate contractor's name, address, and telephone number. Include name and telephone number of the 24-hour contact person representing the contractor.
- Show all nearby streets with street names to assure proper orientation
- Show affected sidewalks, driveways and intersections in the construction work zone including areas affected by taper transition.
- Show location and dimensions of the construction work zone as well as the existing roadway and proposed traffic control area.
- Indicate location of construction signs, barricades, and delineators.
- Label all taper lengths and widths, delineator spacing and sign spacing. (Spacing of channelizing devices should not exceed 25')
- Show all parking restriction zones and signs, as appropriate. Call Parking Office at 831-646-3953 if restricting parking in time-limit or metered zones. Temporary "NO PARKING" signs shall be posted 72 hours prior to commencing work.
- If a sidewalk or path is obstructed then submit a pedestrian detour plan.
- Indicate the encroachment permit number or improvement plan number on the traffic control plan.
- Indicate on the plan the duration of the construction work, date and times.
- All traffic control devices shall be removed from view when not in use, signs should not be facing traffic when not in use.
- Taper Lengths should be $L = WS^2/60$ (displacement width x speed x speed divided by 60)

Revised on 12/11/2007

Figure 6C-2. Types of Tapers and Buffer Spaces

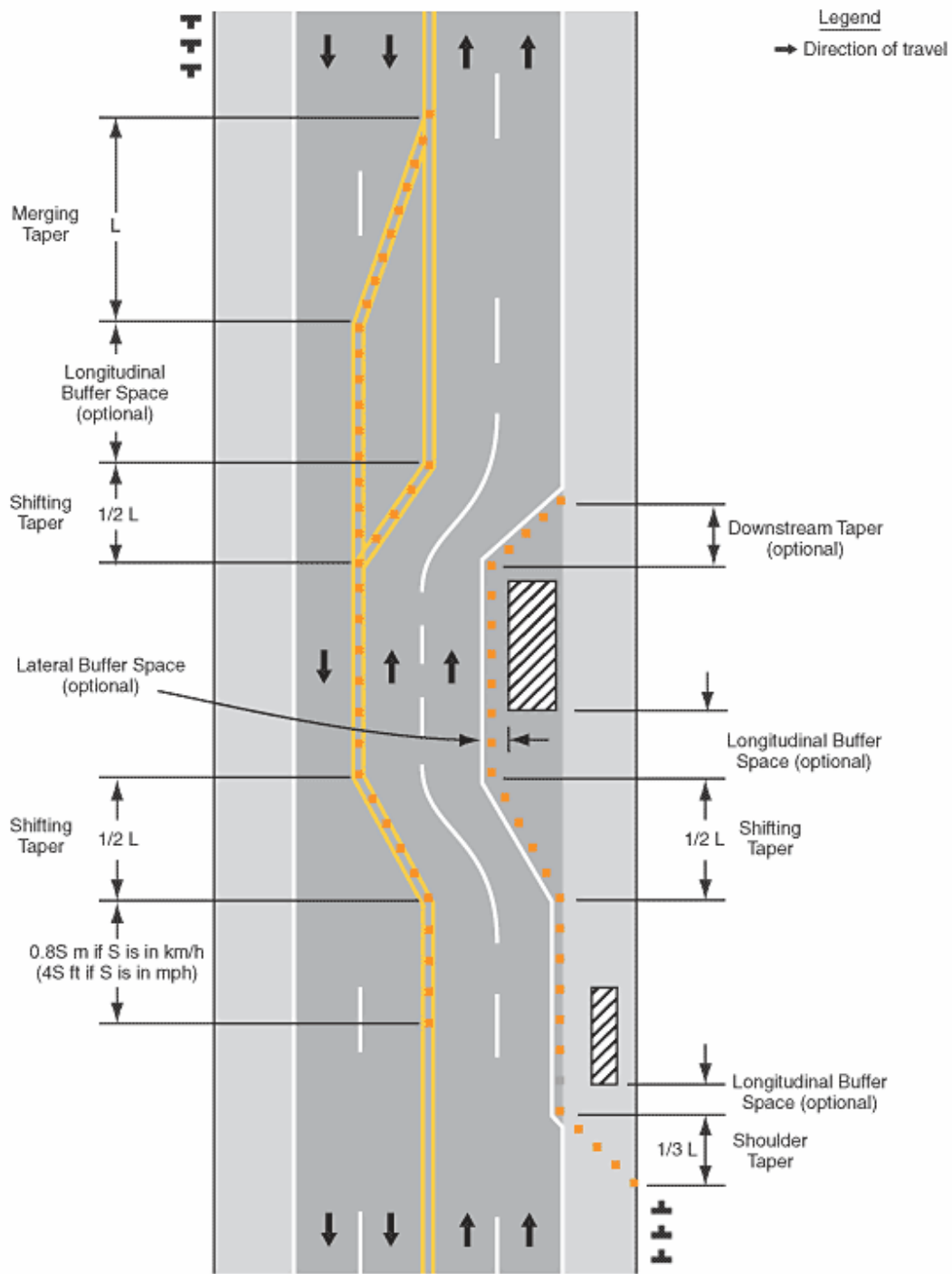


Figure 6C-1. Component Parts of a Temporary Traffic Control Zone

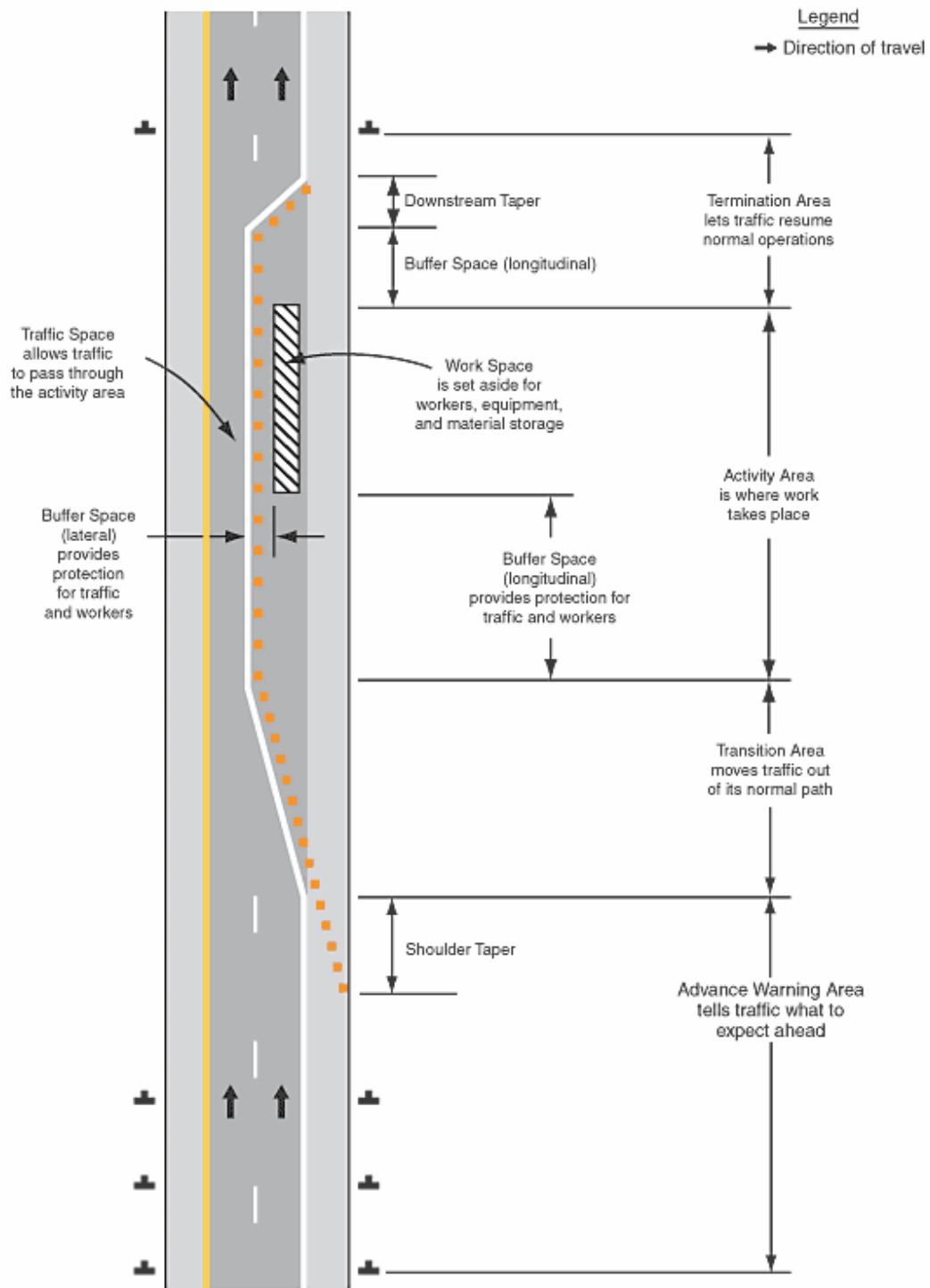


Table 6C-1. Suggested Advance Warning Sign Spacing

Road Type	Distance Between Signs**		
	A	B	C
Urban (low speed)*	30 (100)	30 (100)	30 (100)
Urban (high speed)*	100 (350)	100 (350)	100 (350)
Rural	150 (500)	150 (500)	150 (500)
Expressway / Freeway	300 (1,000)	450 (1,500)	800 (2,640)

* Speed category to be determined by highway agency

** Distances are shown in meters (feet). The column headings A, B, and C are the dimensions shown in Figures 6H-1 through 6H-46. The A dimension is the distance from the transition or point of restriction to the first sign. The B dimension is the distance between the first and second signs. The C dimension is the distance between the second and third signs. (The third sign is the first one in a three-sign series encountered by a driver approaching a TTC zone.)

Figure 6C-3. Example of a One-Lane, Two-Way Traffic Taper

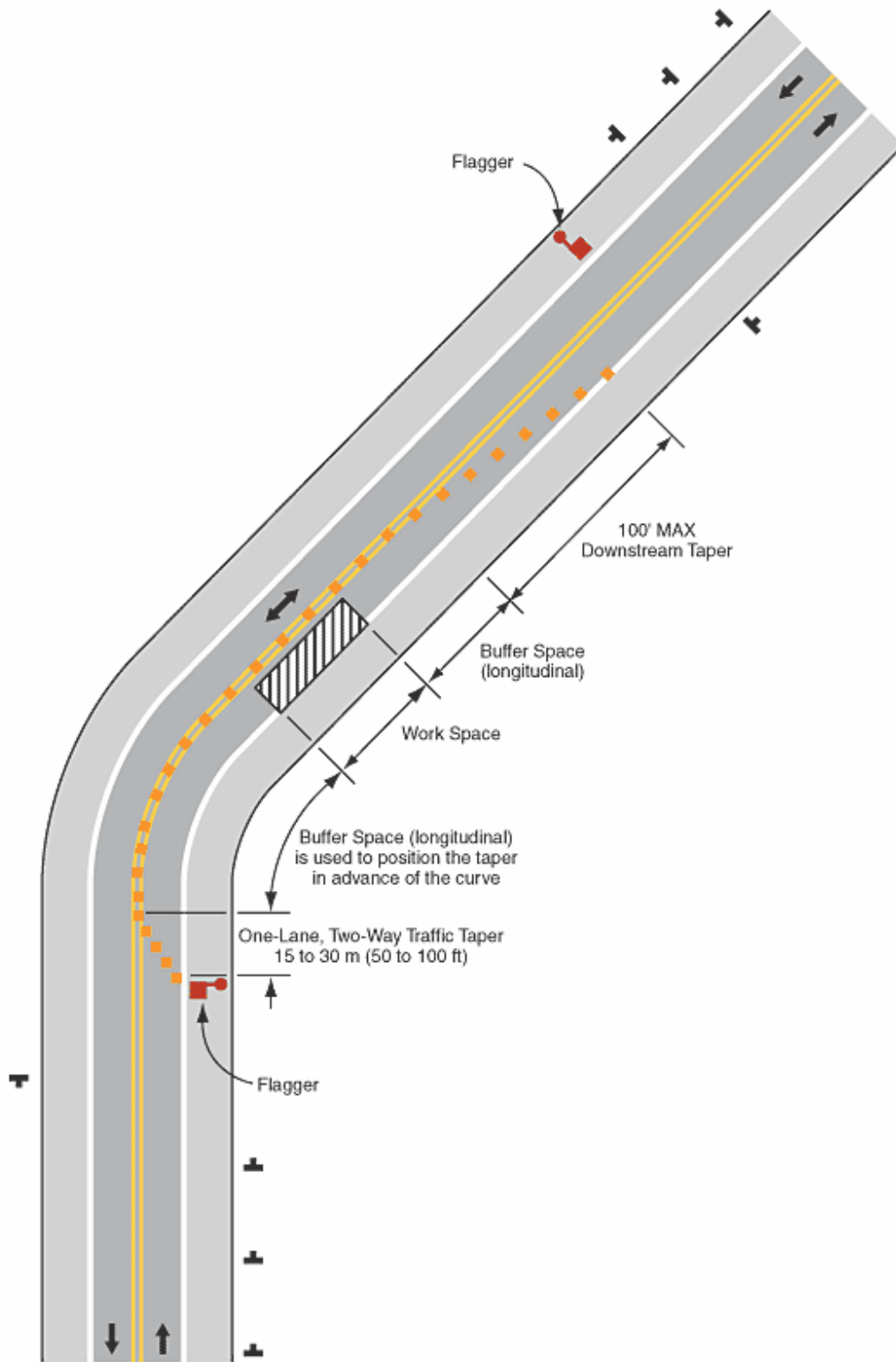


Figure 6H-6. Shoulder Work with Minor Encroachment (TA-6)

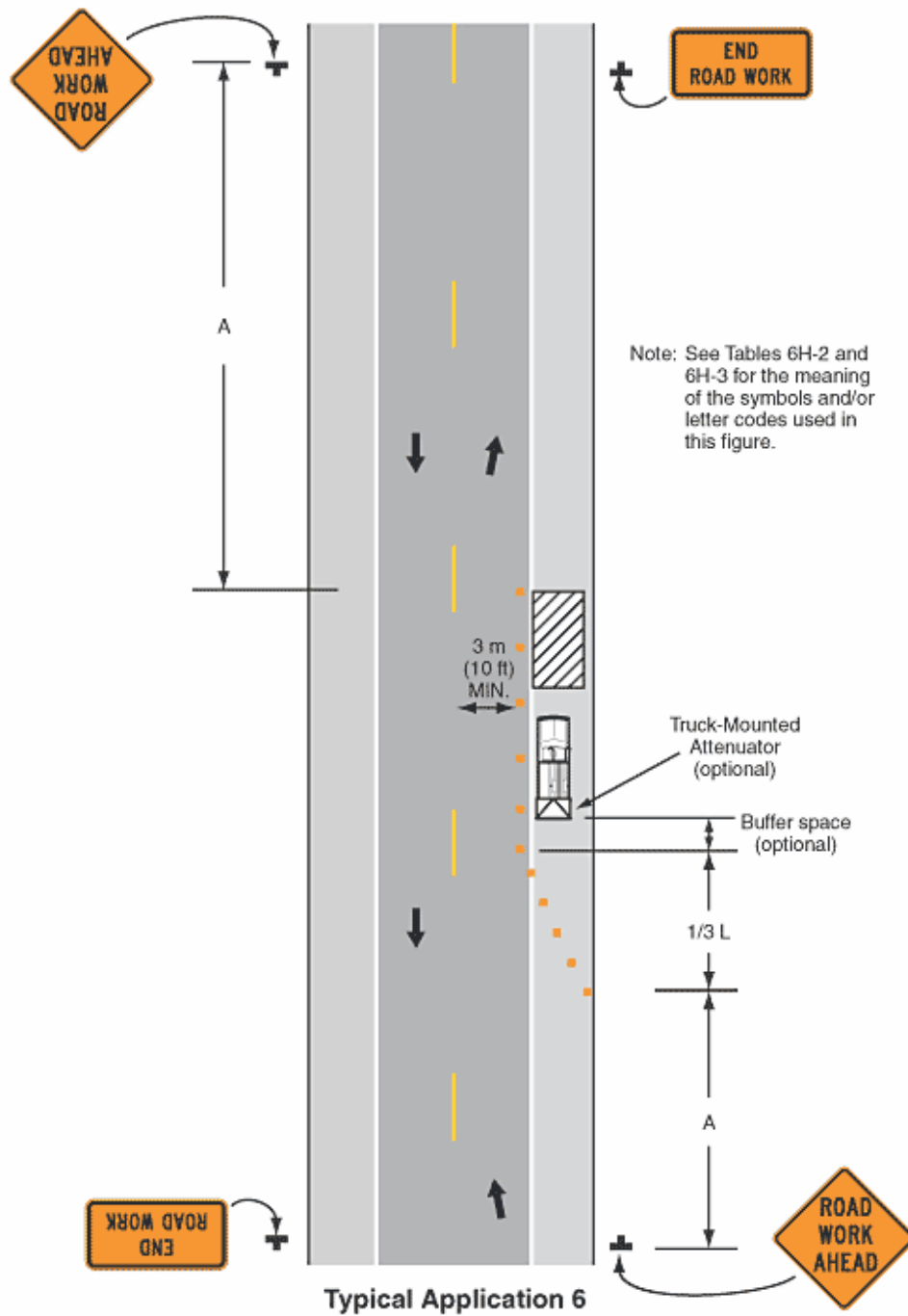
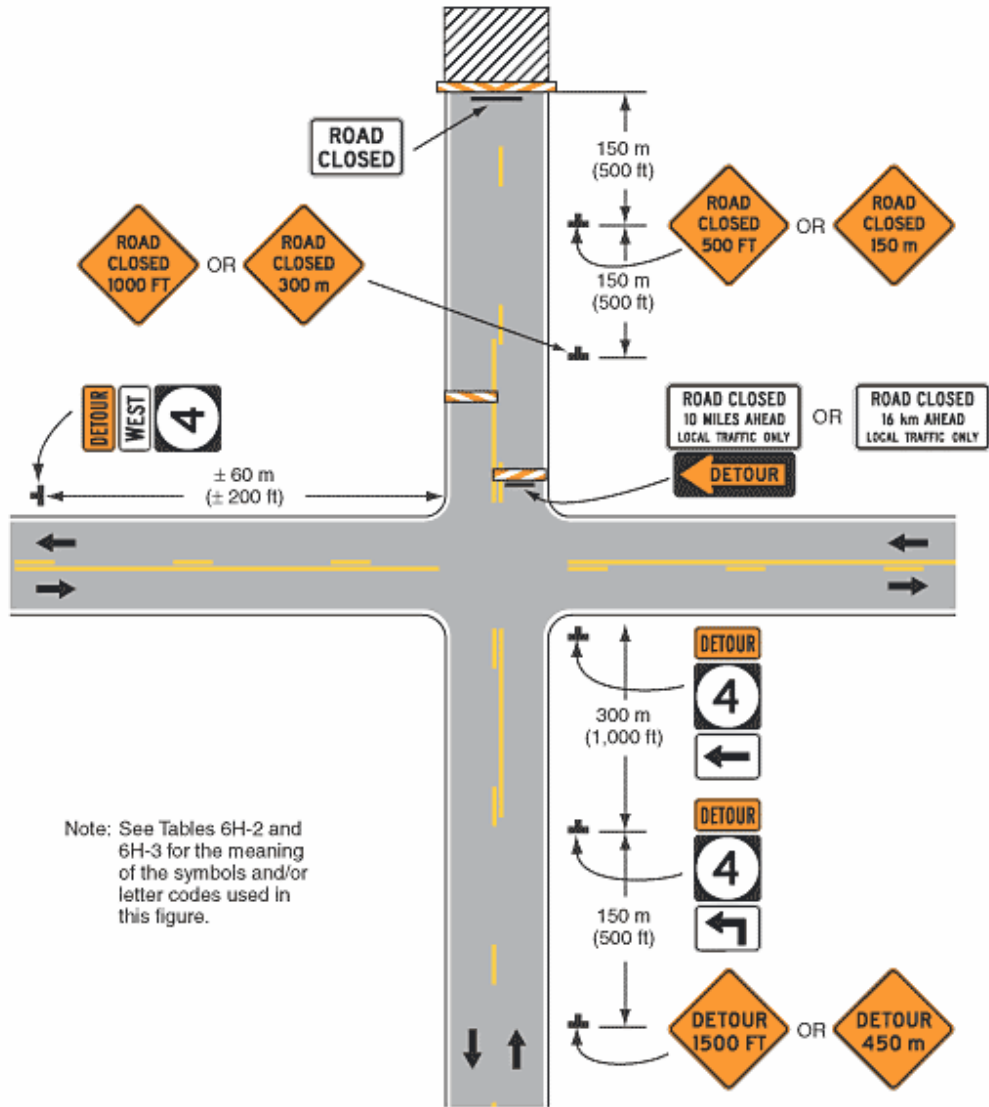
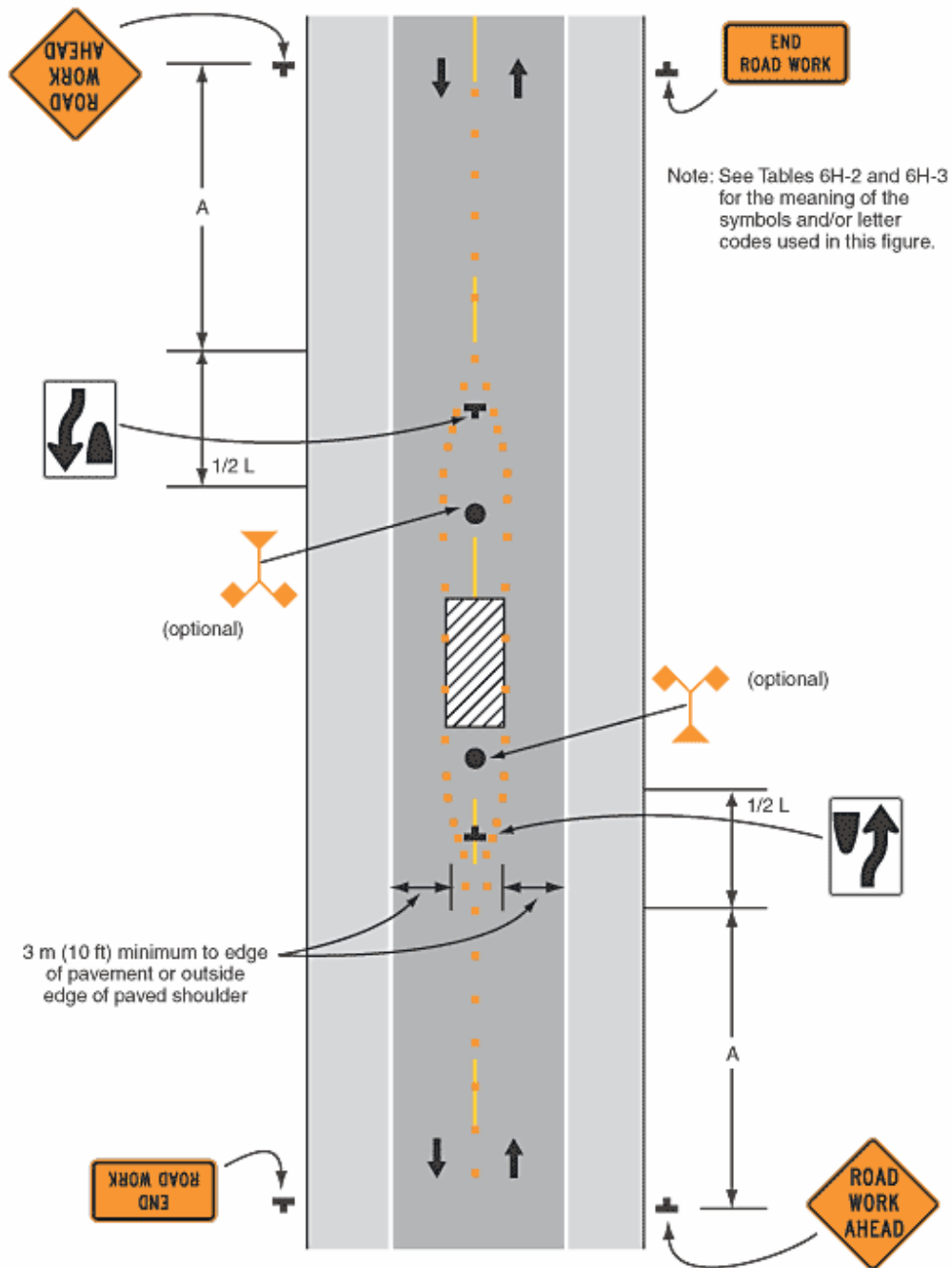


Figure 6H-8. Road Closure with Off-Site Detour (TA-8)



Typical Application 8

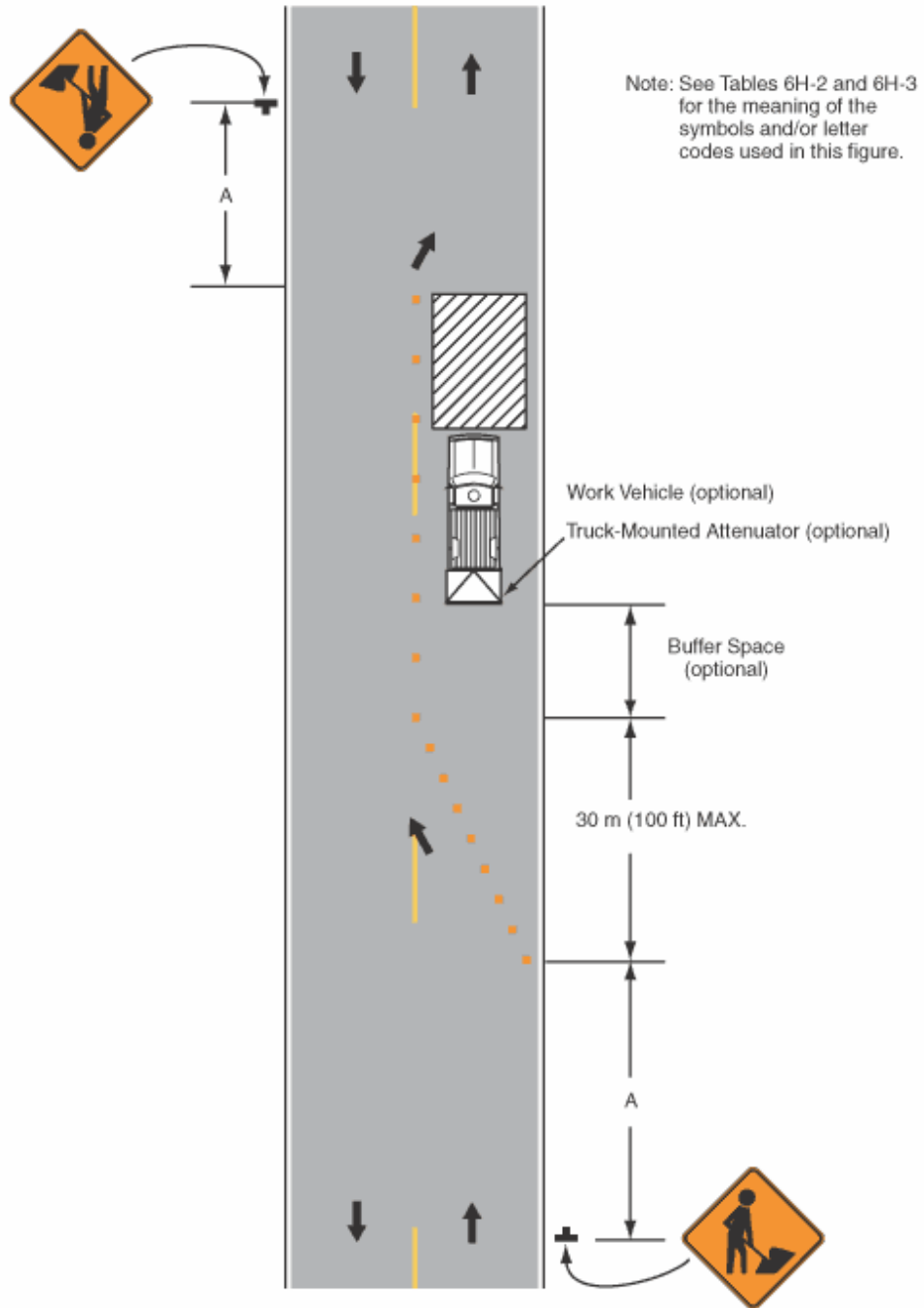
Figure 6H-15. Work in Center of Road with Low Traffic Volumes (TA-15)



Note: See Tables 6H-2 and 6H-3 for the meaning of the symbols and/or letter codes used in this figure.

Typical Application 15

Figure 6H-18. Lane Closure on Minor Street (TA-18)



Typical Application 18

Figure 6H-26. Closure in Center of Intersection (TA-26)

